



CURB GUARD

MADE
IN USA

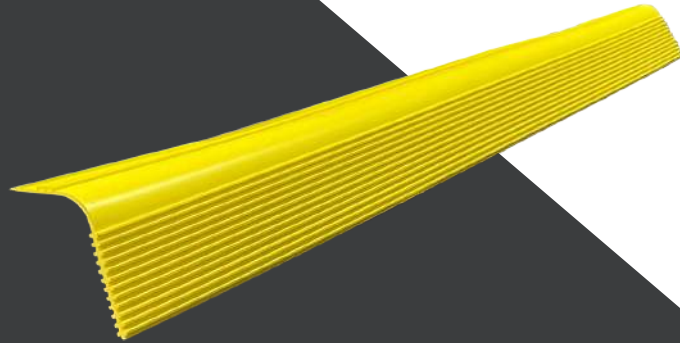
QUICK
PROTECTION

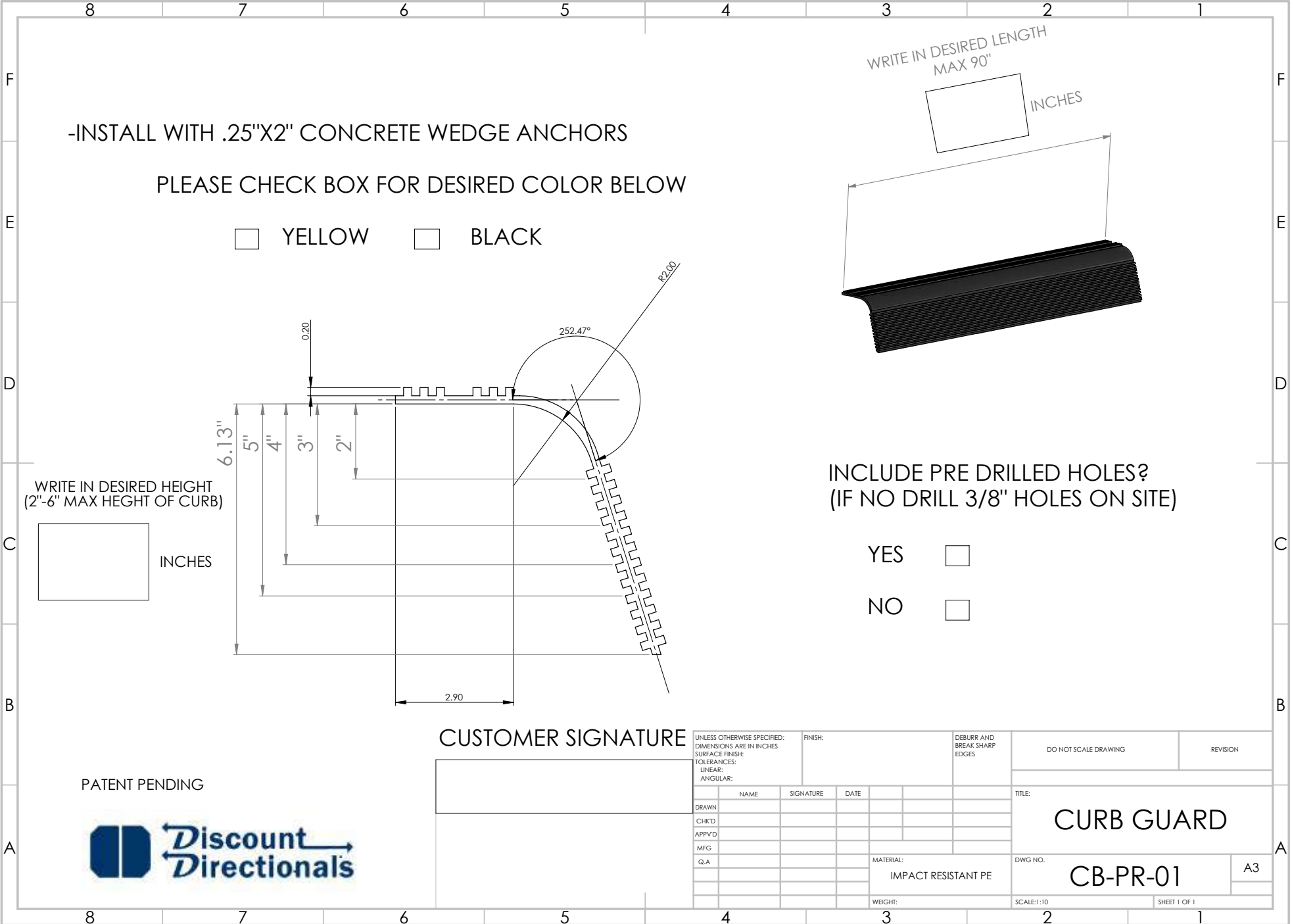
EASY
INSTALL

- Prevents curb damage and scratches & scrape on wheel rims
- Lengths up to 7.5'
- Available in yellow and black
- Perfect for parking spots, entrance gates, ATMs, drive-thru lanes, and more.
- Special formulated impact resistant plastic with five year no fade warranty
- Alternative to painting curbs

EASY INSTALLATION

- Use Concrete Wedge Anchor 1/4" x 2-3/4" bolts for installation- not included with product



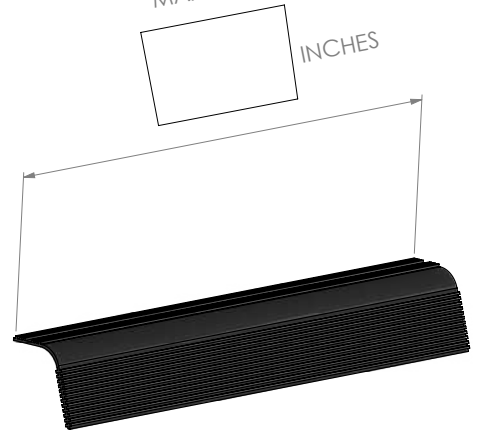


-INSTALL WITH .25"X2" CONCRETE WEDGE ANCHORS

PLEASE CHECK BOX FOR DESIRED COLOR BELOW

YELLOW BLACK

WRITE IN DESIRED LENGTH
MAX 90"



WRITE IN DESIRED HEIGHT
(2"-6" MAX HEIGHT OF CURB)

INCHES

INCLUDE PRE DRILLED HOLES?
(IF NO DRILL 3/8" HOLES ON SITE)

YES
NO

CUSTOMER SIGNATURE

PATENT PENDING



UNLESS OTHERWISE SPECIFIED: DIMENSIONS ARE IN INCHES SURFACE FINISH: TOLERANCES: LINEAR: ANGULAR:			FINISH:	DEBURR AND BREAK SHARP EDGES	DO NOT SCALE DRAWING	REVISION
DRAWN	NAME	SIGNATURE	DATE		TITLE: CURB GUARD	
CHK'D					DWG NO. CB-PR-01	
APP'VD					A3	
MFG				MATERIAL: IMPACT RESISTANT PE	SCALE:1:10	
Q.A				WEIGHT:	SHEET 1 OF 1	